

# Key 2018 figures

## Gastronomy

**19** MICHELIN-STARRED RESTAURANTS  
source: Michelin 2017

**1** EVENT: THE SIRHA  
**208,000** VISITORS  
**25,000** CHEFS

**4,617** RESTAURANTS  
source: Insee-REE count of establishments 12-2015

**3,900 m<sup>2</sup>** FOR THE INTERNATIONAL CITY OF GASTRONOMY

## Culture

VISITORS IN 2017

Musée des Confluences  
**723,583**

Musée des Beaux-arts  
**333,303**  
source: JDA 2017 (visitors 2016)

Lugdunum Musée and Roman theatres  
**109,782**

Quais du Polar  
**80,000**

Bron Book Festival  
**30,000**

Fourvière Nights  
**156,000**

Contemporary Art Biennial  
**317,144**

Light Festival  
**171,000**

Nuits sonores  
**140,000**

Festival of Lights  
**1.8 MILLION**



**2<sup>nd</sup>** CITY IN FRANCE FOR THE HOSTING OF INTERNATIONAL EVENTS  
source: ICCA, May 2017

**Aderly** **103** RELOCATIONS by Aderly\* including

**2,160** JOBS CREATED at 3 years  
**46%** OF INTERNATIONAL RELOCATIONS  
\*The Lyon Area Economic Development Agency

The

## Attractive City

### International reach

**26** PARTNERS

including **11** in Europe, **7** in Africa, **3** in Middle East, **3** in Asia, **2** in North America

**€6.2** MILLION of european funding obtained

### Foreign investment

**17%** SHARE OF BUSINESSES WITH FOREIGN CAPITAL  
source: Bureau van Dijk - calculations of Agence d'urbanisme



## Accessibility

**67.2** MILLION RAIL PASSENGERS in national stations (2016 figures)

**161,000** PASSENGERS / day in the **35** city stations (2016 figures)

**3** HIGH-SPEED TRAIN STATIONS

**1.7** MILLION OF PASSENGER JOURNEYS / day in public transport

**5** MOTORWAYS

AN INTERNATIONAL AIRPORT

**10,280,192** PASSENGERS

**120** DESTINATIONS

**67%** OF INTERNATIONAL TRAFFIC

## Tourism

**5** MILLION OF OVERNIGHT STAYS IN HOTELS  
source: MKG - CCI 2017

**270** HOTELS  
source: Lyon Métropole

**18,226** ROOMS  
source: Lyon Métropole



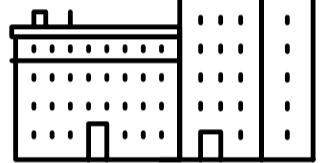
**34,690** JOBS IN TOURISM  
source: Acoos-Ursoal 2016-DGE nomenclature

## Property investment

PRIME RENT **315€/m<sup>2</sup>** in high-rise **300€/m<sup>2</sup>** for new-build

OFFICES Take up of **269,241 m<sup>2</sup>**

**384,000 m<sup>2</sup>** available at 6 months  
source: FNAIM 2017



**€ 905 M** OF PROPERTY INVESTMENT  
source: FNAIM 2017

## Lyon Métropole

**59** COMMUNES

**9,200** EMPLOYEES

**1,370,678** INHABITANTS / +6.7% IN 6 YEARS

i.e. **17.4%** OF THE POPULATION OF THE AUVERGNE-RHÔNE-ALPES REGION  
source: Insee-RP 2015

**€2.4** BILLION OPERATING BUDGET

**€3.5** BILLION OF INVESTMENT COSTS over 2015-2020



**€39** BILLION OF GDP

**€6** BILLION RECEIVED (as salaries) by employed people who work in Lyon Métropole but lives outside it

**€657** MILLION FUNDING of strategic projects registered in the CPER-CFAC  
source: Insee analyses Auvergne-Rhône-Alpes no. 36 in March 2017 from the Insee source - enriched economic file 2012

## The Auvergne-Rhône-Alpes region

**7,877,698** INHABITANTS  
source: Insee-RP 2015

## Metropolitan hub

Lyon Métropole  
+ Saint-Étienne Métropole  
+ ViennAgglo  
+ Communauté d'Agglomération Porte de l'Isère (CAPI)  
+ Communauté de Communes de l'Est Lyonnais (CCEL)  
+ Villefranche Beaujolais Agglo

**180** COMMUNES

**2,061,583** INHABITANTS  
source: Insee-RP 2015

## Lyon Métropole is also...

**€30 M** FOR ECO-RENOVATION

**13,582** SHOPS  
source: Insee-REE count of establishments 12-2015



**766** KM OF BIKEWAYS (1,000 KM BY 2020)

### SOLIDARITY-BASED AND SOCIAL ECONOMIC DEVELOPMENT

**64,658** ESTABLISHMENTS **5,004** JOBS  
source: Insee-Clap to 31-12-2014

**37** PRIORITY DISTRICTS

**500** BUSINESSES COMMITTED to insertion and employment



**366** FARMS  
source: Agreste Rhône-Alpes, Agricultural census 2010

The

## Driving City

**1<sup>st</sup>** CITY IN FRANCE WHERE IT IS GOOD TO LIVE

source: The Economist Intelligence Unit's, "The Most Liveable Cities", August 2017

## contact

[business.greaterlyon.com](http://business.greaterlyon.com)

Anne-Laure BEAUDOIN  
[albeaudoin@grandlyon.com](mailto:albeaudoin@grandlyon.com)

## Industry

**74,800**  
JOBS

source: OPALE

**6,486**  
ESTABLISHMENTS

source: OPALE/Insee 2016

TAKE UP OF  
**401,453 m<sup>2</sup>**

source: FNAIM 2017

**1 INDUSTRY OF THE FUTURE**  
CAMPUS in Vénissieux

**Chemistry Valley**

**€ 500 MILLION**  
OF INDUSTRIAL INVESTMENTS in 5 years

**A DOZEN**  
OF PROJECTS resulting from the "Appel des 30!", currently being set up, **over 25 ha of land**

## Health

**14,571**  
JOBS

source: Acoss-Urssaf to 31-12-2016

**57,000**  
ESTIMATE OF JOBS IN HUMAN HEALTH

**€ 300 M**

OF FUNDS raised by the members of Lyonbiopôle in 2017 / **over one billion in 5 years**

**12,619**  
ESTABLISHMENTS

source: Insee-REE count of establishments 12-2015



**14,489**  
JOBS

source: Acoss-Urssaf to 31-12-2016

**1,500**  
ESTABLISHMENTS

source: Insee-REE count of establishments 12-2015

## Security & cybersecurity



**26,300**  
JOBS INCLUDING



**17,200**  
IN THE PRIVATE SECTOR

**9,100**  
IN THE PUBLIC SAFETY (except Defence)

source: OPALE (census of establishments, workforce estimates from employment size ranges, allocation of a "security" workforce of 20 jobs for the major IT and engineering establishments) - Public employment excluding defence: Insee-Clap to 31-12-2014

## Higher education



**25,000**  
STUDENTS having received training and awareness-raising in entrepreneurship

**197**  
BUSINESSES created by student entrepreneurs since 2014



**13,300**  
RESEARCHERS including **1,800 international researchers**

**5,400**  
PH D STUDENTS



**€ 116 M**  
MÉTROPOLE INVESTMENTS 2014-2020

**155,000**  
STUDENTS INCLUDING

**20,000**  
INTERNATIONAL STUDENTS

source: Rectorat 2017



**2 CAMPUS WITH INTERNATIONAL VISIBILITY**

LYONTECH LA DOUA & CHARLES MÉRIEUX

**1<sup>st</sup>** FRANCE'S INDUSTRIAL AGGLOMERATION

The

# Manufacturing City

## Businesses & jobs

**125,561**  
ESTABLISHMENTS (public and private)

source: Insee-REE count of establishments 12-2015

**654,139**  
SALARIED JOBS including **559,987** in the private sector

**9,694**  
NET JOB creation figure

sources: Insee-Clap 2015 & Acoss-Urssaf to 31-12-2015 and 2016

**17,137**  
BUSINESSES created in 2016

source: Insee-Sirène demography of businesses 2016

**4,881** SME : **192** ISE

source: Insee-REE count of businesses 12-2015

**9.4%**  
UNEMPLOYMENT LEVEL (9.7% in France)

source: Insee 3<sup>rd</sup> quarter 2017

## Gems

**64** **BUSINESSES** awarded labels since the end of 2011

**€ 540 M** of turnover

**OVER 2,850** EMPLOYEES

## The Smart City



**WORLD LEADER** IN PUBLIC TRANSPORT BY ELECTRIC DRIVERLESS VEHICLE / WORLD'S FIRST DRIVERLESS TAXI

**1<sup>st</sup>** SMART CITY IN FRANCE

source: Maddyne, 2017

**€ 340 M**

**INVESTMENTS BY PARTNERS** IN THE SMART CITY



**EUROPEAN'S TOP SMART GRIDS TERRITORY**

**60,834**  
VISITORS IN 2016 TO POLLUTEC

**103**  
EXPERIMENTAL PROJECTS



## Digital

**2<sup>nd</sup>** DIGITAL CLUSTER IN FRANCE

source: Lyon French Tech

**LYON FRENCH TECH: MORE THAN 240** STARTUPS LISTED as part of Lyon's innovation ecosystem

**41,583**  
JOBS

source: Acoss-Urssaf to 31-12-2016

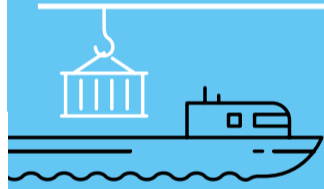
**7,149**  
ESTABLISHMENTS

source: Insee-REE count of establishments 12-2015



**23-27 APRIL** hosting of WWW2018 "the web conference 2018"

## Transport – Logistics



**37,985**  
JOBS

source: Acoss-Urssaf au 31-12-2016

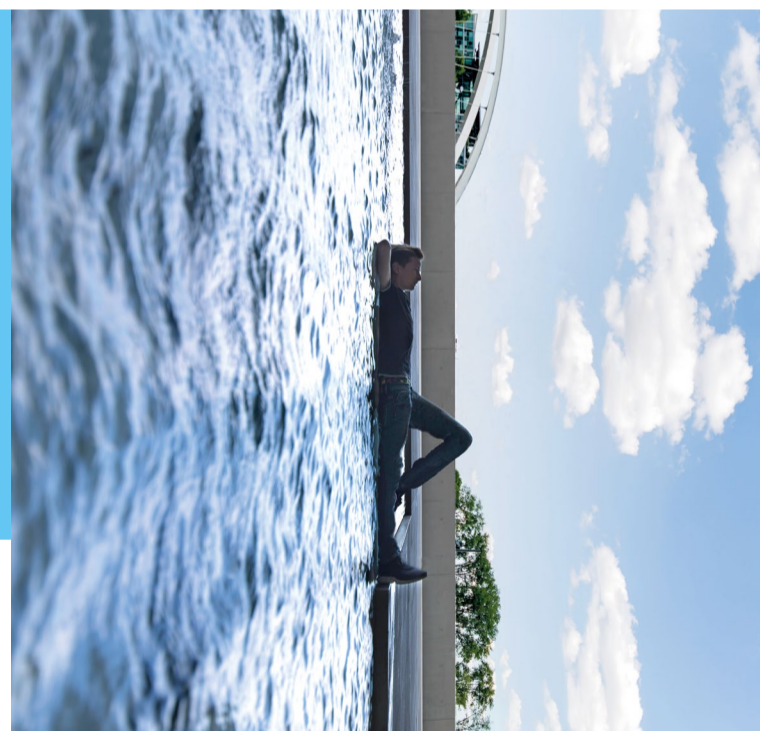
TAKE UP OF  
**367,760 m<sup>2</sup>**

source: FNAIM 2017



**3,574**  
ESTABLISHMENTS

source: Insee-REE count of establishments 12-2015



## Research



**550**  
LABORATORIES PUBLIC AND PRIVATE

**484**  
PATENTS FILED

source: INPI 2015 (processes per applicant)

## Private education



**1,135**  
ESTABLISHMENTS

INCLUDING **71** IN HIGHER EDUCATION

source: Acoss-Urssaf to 31-12-2016



**15,052**  
JOBS

INCLUDING **3,284** IN HIGHER EDUCATION

# The Learning City

**1<sup>st</sup>** FRENCH CITY, OTHER THAN PARIS, OF CITIES IN WHICH IT IS GOOD TO STUDY

source: L'étudiant 2017