

WELCOME

LYON **BIO** POLE

Rhône-Alpes' Gateway to Innovative Business in Life Sciences



BD **BIOMÉRIEUX** **cea** **MERIAL** **sanofi pasteur**

FOUNDERS AND BOARD MEMBERS

Alizé Pharma **aviesan** **Immuni** **UNIVERSITÉ DE LYON**

BOARD MEMBERS

Ministère de l'Économie, du Développement et du Travail **dgcis** **Rhône-Alpes** **GRAND LYON** **isère** **ANR** **oseo** **l'ain** **LYONBIOADVISOR**

STATE AND LOCAL GOVERNMENTS SUPPORTS

www.lyonbiopole.com **CHAMBRE DE COMMERCE D'INDUSTRIE LYON** **LES PÔLES DE COMPÉTITIVITÉ**

RESEARCH AND HIGHER EDUCATION

TALENTS



ENS Lyon - Monod site

© All rights reserved

20,000 students in life sciences
2 Research & Higher Education Poles : Universities of Lyon & Grenoble



BSL4 Jean Mérieux-Inserm

© INSERM - Patrice Latron

DISCOVER



Innovation campus in micro and nanotechnologies Minatec

© CEA Minatec - P. Donche

INFECTIOUS DISEASES **2,500** researchers in infectious diseases, half private and half public
4,000 researchers in micro and nanotechnology in Grenoble of which **300** specialized in health applications (CEA Leti...)
CANCER **130** academic labs in oncology
NEUROSCIENCES More than **700** researchers

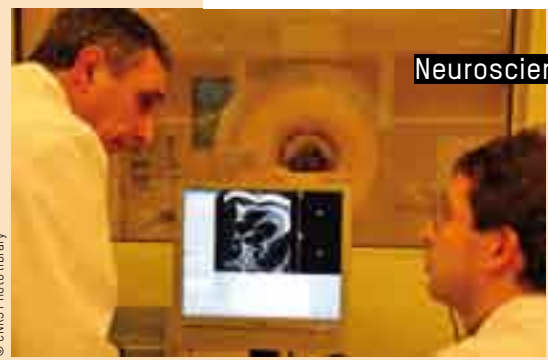


IARC's Tower

© International Agency For Research on Cancer, R.Dray 2011

INTERNATIONAL R&D INFRASTRUCTURES

7 International and European R&D Infrastructures:
BSL4 Jean Mérieux-Inserm laboratory, ESRF, EMBL, ILL, 1GHz NMR, WHO



Neurosciences

© CMS Photo library

SYSTEMS BIOLOGY & MEDICINE



Rethinking research, understanding life, improving health



MULTI-DISCIPLINARITY

CLINICAL NETWORKS

350 clinical trials promoted by regional University Hospitals
More than **1,500** clinical trials involving regional clinical networks
31,790 hospital beds, **338** public and private health offices
3 University Hospitals, **20** CRO operating in the region



1st
CyberKnife VSI
radiotherapy
system in
Europe

© Léon Bérard Center

CURE



Leon-Berard Cancer
Center (CLB)

© Léon Bérard Center



da Vinci®
surgical
robot

www.chirurgie-gynecologique-senologique.com

PATIENTS

1 European
Lymphoma Institute



1 Sepsis program, coordinated by Lyonbiopole, based on a Rhône-Alpes clinical network gathering the University Hospitals of Grenoble and Saint Etienne and the Lyon Civil Hospitals (HCL)



Lyon Civil
Hospitals (HCL)

© HCL



21,000 sq.ft / 1,920 sq.m

of laboratories BSL2 / BSL3. Opened April 2009

LABS



Biosafety level 2: sample preparation - PX Therapeutics

MUTUALIZE



Domilyon building

For a comprehensive and personalized management of infectious diseases



LYONBIOTECH

MAJOR PROJECTS



Samples microscopic analysis

acCInov

64,583 sq.ft / 6,000 sq.m of innovation platforms that will provide biological analysis and bioproduction services, run by new or emerging SMBs. Opening in 2013

OPTIMIZE



LyonBioTech

TECHNOLOGICAL RESEARCH INSTITUTE, IN THE FIELD OF INFECTIOUS DISEASES

1 project in collaboration with Institut Pasteur Paris.

Up to 430,000 sq.ft / 35 to 40,000 sq.m

of real estate dedicated to R&D in biotechnologies.

To be announced summer 2011

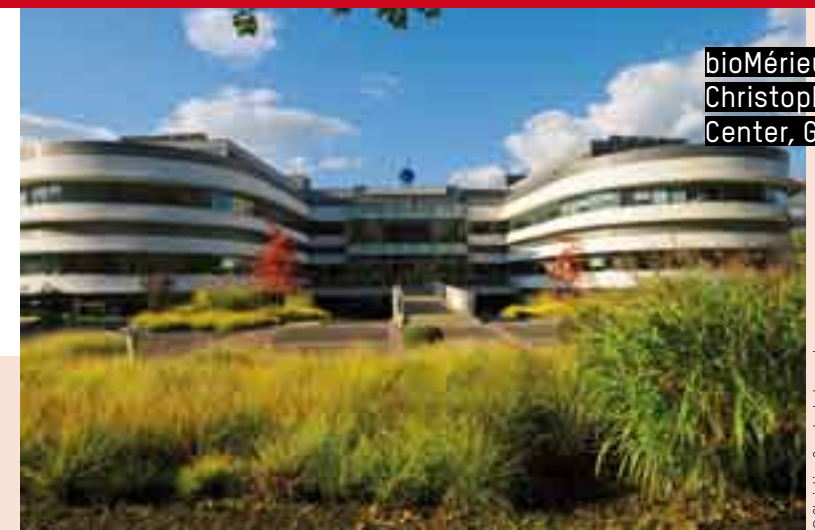
START-UP

53 companies in life sciences created since 1999. On average **60%** of companies are celebrating their 5 years of activity

THE BIO ENTREPRENEURS' HUB

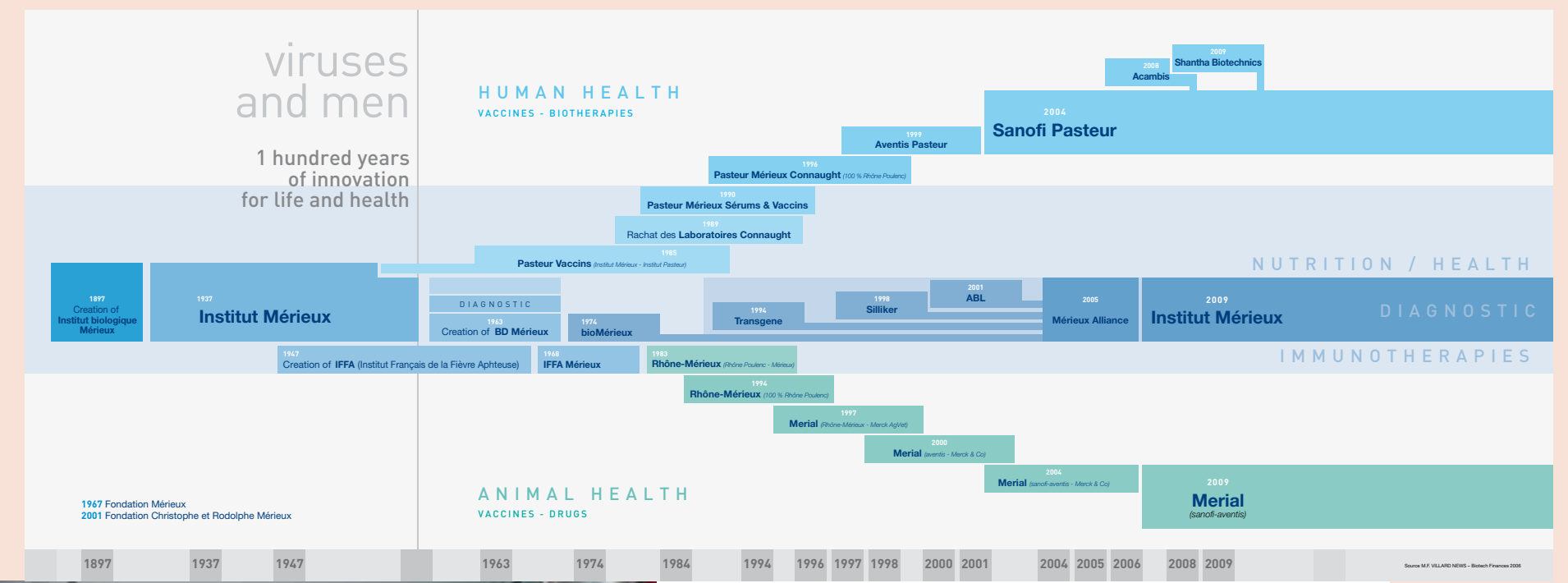
More than a century of history of innovation for life and health

600 companies in life sciences
70,000 employees
100 biotech companies



bioMérieux, Christophe Mérieux Center, Grenoble

© Christian Garnet, photograph



4 world-class leaders as founders of Lyonbiopole: **Sanofi Pasteur** (human vaccines), **Merial** (animal health), **bioMérieux** (*in vitro* diagnostics), and **BD** (drug delivery system)

15 world-class leaders in biotechs & medtechs: **Merck-Serono**, **Genzyme**, **Mylan**, **Aguezzant**, **Covidien**, **Depuy**, **Gambro**, **Integra LifeSciences...**

A strong & diversified industrial basis in medtechs: **implants**, **augmented & mini-invasive surgery**, **medical textile**, **eHealth...**

A global center of excellence in vaccines and diagnostics

Manufacturing (IPV Polio) Marcy l'Etoile May 2006



© Sanofi Pasteur - Véronique Védrenne

BIOPRODUCTION

1st vaccine production site in Europe

INVESTMENT

THE BIO ENTREPRENEURS' HUB

Since 2005, Lyonbiopole has accredited **87** multi-partner R&D projects for a total R&D investment of **€459 million**

More than **€1 billion** industrial investment between 2004 and 2010: Sanofi Pasteur, Merial, bioMérieux, Genzyme, Mylan, Merck Serono...

COLLABORATIVE R&D

Since 2005, 1,000 jobs in Rhône-Alpes due to the development of 87 R&D projects supported by Lyonbiopole

JOB

They chose Lyon region in 2010: Singulex, OncoTherapy Science, Olympus, Baxter...

bioMérieux headquarters, Marcy l'Etoile



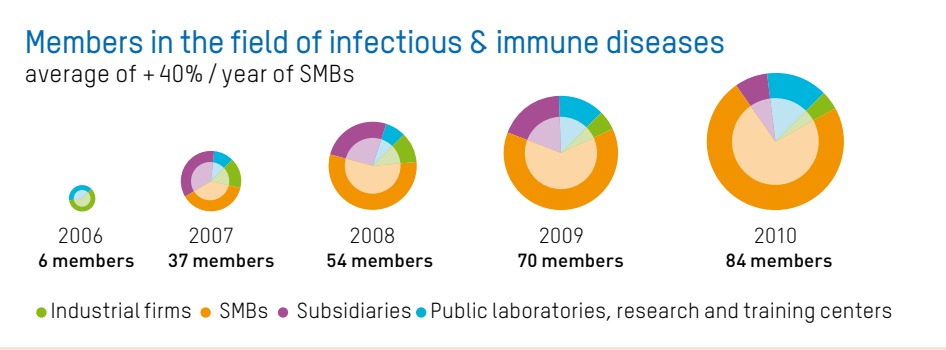
Aerial view of Lyon



Boosting innovation to strengthen companies' competitiveness and to increase Rhône-Alpes region's attractiveness

BIOTECH'S DYNAMISM SUPPORTED BY LYONBIOPOLE
+ 30% of new cluster's member SMBs per year in infectious & immune diseases

Bioproduction site in Lyon of Genzyme





2nd edition « SMB & Private funding: How to strengthen your equity? » December 2010

© Lyonbiopôle - Jean Fortso

More than **€50 M** raised in funding rounds by life sciences SMBs in Rhône-Alpes in 2010. **13** listed companies

PRIVATE EQUITY

PRIVATE INVESTORS

FUND RAISING

10 fund raising in biotech-health in Rhône-Alpes in 2010

Adocia > €14 M January 2010

Fluoptics > €750 k May 2010

Biom'up > €3M June 2010

Reproxx > €300 K June 2010

Eyetechcare > €7.5 M June 2010

Poxel > €16 M July 2010

Synapcell > €520 K October 2010

Orega biotech > €1 M November 2010

CellMade > €1.7 M November 2010

Dextérité Surgical > €1M December 2010



2nd edition « SMB & Private funding: How to strengthen your equity? » December 2010

© Lyonbiopôle - Jean Fortso

PUBLIC PARTNERS AND FUNDING

CONNECTIONS



Biotuesday 2010

Set up partnerships

Finance projects

Transfer technologies

Fast-Track Partnering for all your projects

Settle your business

Create a start-up

Develop your company

4th edition of Partening Days, October 2010



© Lyonbiopole

NETWORK

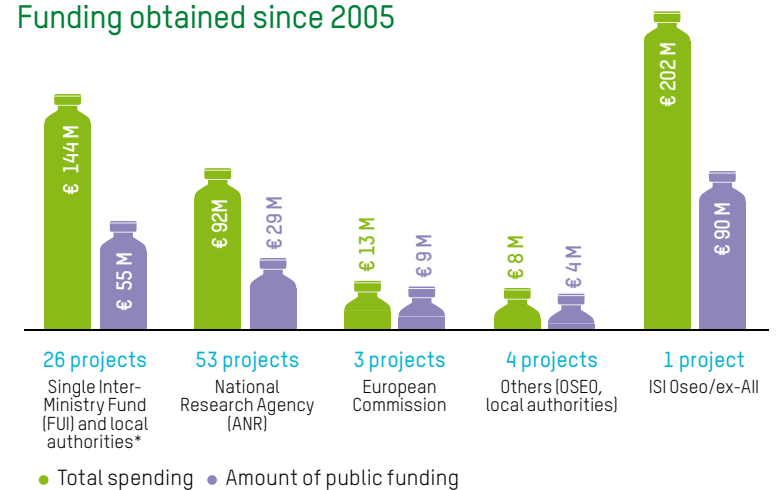
Since 2005, CLARA has selected **21** projects representing a total budget of **€23 M** of which **€7M** were funded by the local authorities

In 2009, OSEO invested in Rhône-Alpes: **€4.27 M** in **29** «pharmaceutical biotech» projects ; **€6.9 M** in **43** «medical technology» projects

SUPPORT

Since 2005, Lyonbiopole has accredited **87** multi-partner R&D projects for a total R&D investment of **€459 million** of which **€187 million** have been obtained from French State, local authorities*, European Commission and OSEO

Funding obtained since 2005



* European Regional Development Fund (ERDF), The Rhône-Alpes Region, the County Councils of Rhône, Isère and Ain Greater Lyon, Grenoble Alpes Metropole and Grenoble City